

Ridgebank Cres between Carey Rd and Vanalman Ave

March 11, 2019 To March 15, 2019



The data presented here is for information purposes only and should not be considered authoritative for construction, geotechnical, engineering, navigational, legal, or other site-specific uses. The information shared is owned by the Transportation Division of the Engineering Department at the District of Saanich. Accuracy is not guaranteed.

Start Date: 11-Mar-19
 Start Time: 0:05
 Station ID: R0915-01

Location 1: Ridgebank Cres between Carey Rd and Vanalman Ave

Note: Carey Rd and Vanalman Ave

DATE:	March 11, 2019		March 12, 2019		March 13, 2019		March 14, 2019		March 15, 2019		WK AVG		WK AVG	HOURLY
	MON		TUE		WED		THURS		FRI				CH 1+2	%
Time:	EB	WB	EB	WB	EB	WB	EB	WB	EB	WB	EB	WB		
12-1 AM			2	3	2	6	3	8			2	6	8	0.4%
1-2 AM			0	0	0	0	0	0			0	0	0	0.0%
2-3 AM			0	3	3	1	3	1			2	2	4	0.2%
3-4 AM			11	0	8	0	10	0			10	0	10	0.5%
4-5 AM			6	1	8	3	3	1			6	2	7	0.4%
5-6 AM			18	6	18	4	16	3			17	4	22	1.0%
6-7 AM			58	12	65	16	80	15			68	14	82	3.9%
7-8 AM			130	29	134	37	129	36			131	34	165	7.9%
8-9 AM			168	72	183	53	171	52			174	59	233	11.2%
9-10 AM			64	34	67	35	83	41			71	37	108	5.2%
10-11 AM			47	40	45	26	55	40			49	35	84	4.1%
11-12 PM			59	42	45	41	70	54			58	46	104	5.0%
12-1 PM			46	50	47	59	59	60			51	56	107	5.2%
1-2 PM			41	54	62	52	57	55			53	54	107	5.2%
2-3 PM			82	72	74	76	91	93			82	80	163	7.8%
3-4 PM			86	97	70	107	88	124			81	109	191	9.2%
4-5 PM			70	142	82	149	73	142			75	144	219	10.6%
5-6 PM			67	103	64	91	67	94			66	96	162	7.8%
6-7 PM			46	77	37	64	39	77			41	73	113	5.5%
7-8 PM			35	40	36	33	38	39			36	37	74	3.5%
8-9 PM			24	25	23	21	14	27			20	24	45	2.2%
9-10 PM			20	17	16	17	17	13			18	16	33	1.6%
10-11 PM			9	19	9	14	10	11			9	15	24	1.2%
11-12 AM			6	5	3	9	7	6			5	7	12	0.6%
LANES			1095	943	1101	914	1183	992			1126	950	2076	100.0%
TOTAL			2038		2015		2175				2080			
	MON		TUE		WED		THURS		FRI		WK AVG			

PEAK HOUR					TOTAL VEHICALS-PEAK PERIODS		2 HOUR PEAK INTERVALS				
MAX. 7 - 9 am PEAK HOUR	233	⇒	11.2%	between 8-9 AM	990	⇒	6 HR TOTAL	2 HR AM (7 - 9 AM)			
MAX. 7 - 11 am PEAK HOUR	233	⇒	11.2%	between 8-9 AM	779	⇒	4 HR TOTAL	VEH / HR	VEH / 2HR	2 HR %	
MAX. 11 am - 1 pm PEAK HOUR	107	⇒	5.2%	between 12-1 PM				7-8 AM	165	398	19.2%
MAX. 11 am - 3 pm PEAK HOUR	163	⇒	7.8%	between 2-3 PM				8-9 AM	233		
MAX. 4 - 6 pm PEAK HOUR	219	⇒	10.6%	between 4-5 PM				2 HR NOON (11 - 1 PM)			
MAX. 3 - 6 pm PEAK HOUR	219	⇒	10.6%	between 4-5 PM				VEH / HR	VEH / 2HR	2 HR %	
								11-12 PM	104	211	10.1%
								12-1 PM	107		
								2 HR PM (4 - 6 PM)			
								VEH / HR	VEH / 2HR	2 HR %	
								4-5 PM	219	381	18.4%
								5-6 PM	162		

Ridgebank Cres between Carey Rd and Vanalman Ave

Westbound

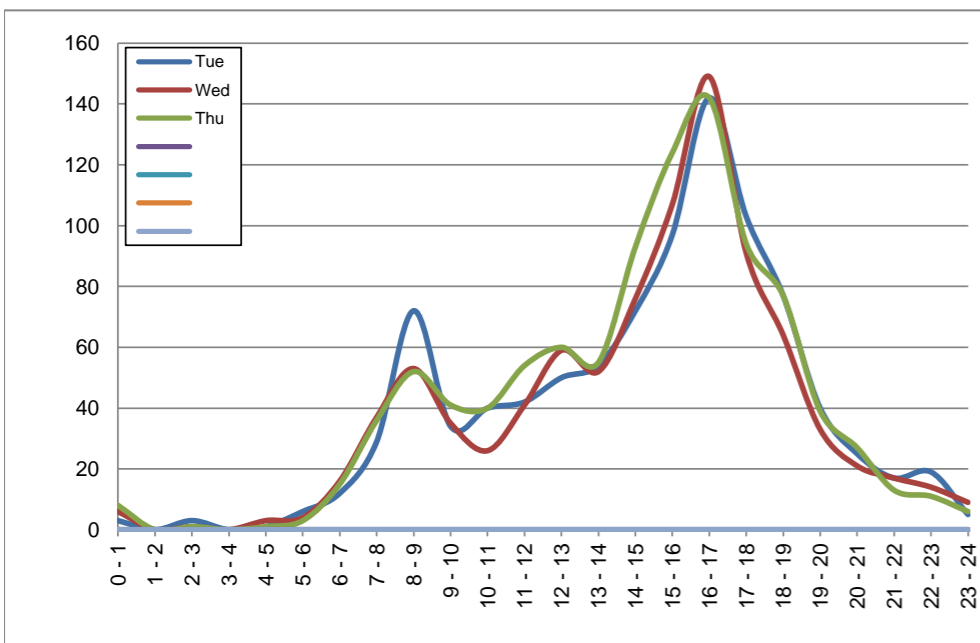
March 12, 2019 to March 14, 2019

Hourly Volumes

Time Period	Tue	Wed	Thu				
	Mar 12	Mar 13	Mar 14				
0 - 1	3	6	8				
1 - 2	0	0	0				
2 - 3	3	1	1				
3 - 4	0	0	0				
4 - 5	1	3	1				
5 - 6	6	4	3				
6 - 7	12	16	15				
7 - 8	29	37	36				
8 - 9	72	53	52				
9 - 10	34	35	41				
10 - 11	40	26	40				
11 - 12	42	41	54				
12 - 13	50	59	60				
13 - 14	54	52	55				
14 - 15	72	76	93				
15 - 16	97	107	124				
16 - 17	142	149	142				
17 - 18	103	91	94				
18 - 19	77	64	77				
19 - 20	40	33	39				
20 - 21	25	21	27				
21 - 22	17	17	13				
22 - 23	19	14	11				
23 - 24	5	9	6				
Day Total	943	914	992				

15-Minute Volumes

Time Start	Tue	Wed	Thu				
	Mar 12	Mar 13	Mar 14				
0:00	2	4	3				
0:15	0	1	1				
0:30	1	0	3				
0:45	0	1	1				
1:00	0	0	0				
1:15	0	0	0				
1:30	0	0	0				
1:45	0	0	0				
2:00	1	0	1				
2:15	0	0	0				
2:30	2	1	0				
2:45	0	0	0				
3:00	0	0	0				
3:15	0	0	0				
3:30	0	0	0				
3:45	0	0	0				
4:00	0	0	0				
4:15	0	0	0				
4:30	1	1	0				
4:45	0	2	1				
5:00	0	0	0				
5:15	1	0	2				
5:30	0	1	0				
5:45	5	3	1				
6:00	1	0	3				
6:15	6	7	4				
6:30	1	3	2				
6:45	4	6	6				
7:00	7	8	8				
7:15	5	7	8				
7:30	6	5	8				
7:45	11	17	12				
8:00	26	13	17				
8:15	10	18	11				
8:30	21	10	7				
8:45	15	12	17				
9:00	13	9	14				
9:15	11	10	11				
9:30	4	4	7				
9:45	6	12	9				
10:00	11	4	15				
10:15	10	9	10				
10:30	9	7	5				
10:45	10	6	10				
11:00	4	8	8				
11:15	6	6	11				
11:30	14	13	15				
11:45	18	14	20				
12:00	10	14	16				
12:15	17	20	10				
12:30	16	12	21				
12:45	7	13	13				
13:00	18	17	21				
13:15	13	14	9				
13:30	13	8	10				
13:45	10	13	15				
14:00	16	18	21				
14:15	12	16	22				
14:30	24	22	31				
14:45	20	20	19				
15:00	25	23	22				
15:15	18	23	28				
15:30	28	29	39				
15:45	26	32	35				
16:00	45	39	34				
16:15	38	35	40				
16:30	32	35	33				
16:45	27	40	35				
17:00	39	35	29				
17:15	22	25	25				
17:30	22	19	21				
17:45	20	12	19				
18:00	20	27	22				
18:15	29	17	23				
18:30	13	9	18				
18:45	15	11	14				
19:00	17	13	15				
19:15	6	9	7				
19:30	9	8	11				
19:45	8	3	6				
20:00	8	6	5				
20:15	11	4	9				
20:30	2	7	8				
20:45	4	4	5				
21:00	7	5	6				
21:15	3	9	1				
21:30	6	2	5				
21:45	1	1	1				
22:00	9	2	1				
22:15	3	3	5				
22:30	2	2	3				
22:45	5	7	2				
23:00	4	4	2				
23:15	0	3	2				
23:30	0	2	1				
23:45	1	0	1				



Site notes:

Ridgebank Cres between Carey Rd and Vanalman Ave

Eastbound

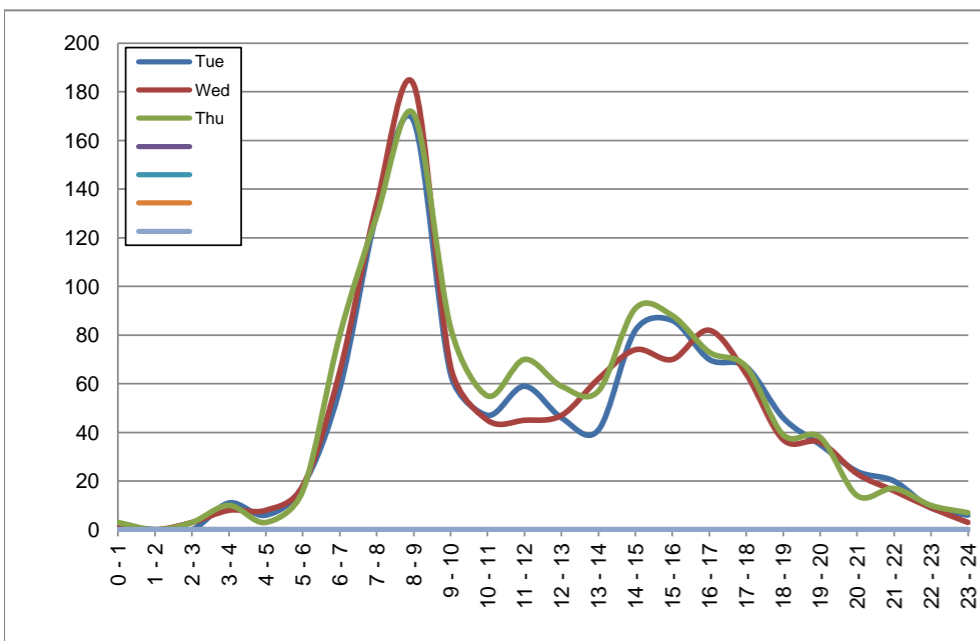
March 12, 2019 to March 14, 2019

Hourly Volumes

Time Period	Tue	Wed	Thu				
	Mar 12	Mar 13	Mar 14				
0 - 1	2	2	3				
1 - 2	0	0	0				
2 - 3	0	3	3				
3 - 4	11	8	10				
4 - 5	6	8	3				
5 - 6	18	18	16				
6 - 7	58	65	80				
7 - 8	130	134	129				
8 - 9	168	183	171				
9 - 10	64	67	83				
10 - 11	47	45	55				
11 - 12	59	45	70				
12 - 13	46	47	59				
13 - 14	41	62	57				
14 - 15	82	74	91				
15 - 16	86	70	88				
16 - 17	70	82	73				
17 - 18	67	64	67				
18 - 19	46	37	39				
19 - 20	35	36	38				
20 - 21	24	23	14				
21 - 22	20	16	17				
22 - 23	9	9	10				
23 - 24	6	3	7				
Day Total	1095	1101	1183				

15-Minute Volumes

Time Start	Tue	Wed	Thu				
	Mar 12	Mar 13	Mar 14				
0:00	2	1	2				
0:15	0	0	1				
0:30	0	0	0				
0:45	0	1	0				
1:00	0	0	0				
1:15	0	0	0				
1:30	0	0	0				
1:45	0	0	0				
2:00	0	1	0				
2:15	0	0	1				
2:30	0	1	2				
2:45	0	1	0				
3:00	0	0	1				
3:15	1	0	1				
3:30	2	4	2				
3:45	8	4	6				
4:00	2	4	1				
4:15	2	3	1				
4:30	1	0	0				
4:45	1	1	1				
5:00	0	1	2				
5:15	0	0	0				
5:30	4	5	6				
5:45	14	12	8				
6:00	7	7	12				
6:15	14	24	28				
6:30	19	17	14				
6:45	18	17	26				
7:00	20	26	19				
7:15	35	26	42				
7:30	37	34	23				
7:45	38	48	45				
8:00	38	48	42				
8:15	31	49	36				
8:30	51	45	48				
8:45	48	41	45				
9:00	20	23	25				
9:15	22	21	32				
9:30	11	16	10				
9:45	11	7	16				
10:00	10	12	11				
10:15	13	14	20				
10:30	10	9	13				
10:45	14	10	11				
11:00	7	14	14				
11:15	17	7	21				
11:30	15	11	16				
11:45	20	13	19				
12:00	14	14	9				
12:15	9	7	8				
12:30	16	10	17				
12:45	7	16	25				
13:00	13	15	16				
13:15	14	16	17				
13:30	6	12	10				
13:45	8	19	14				
14:00	21	12	13				
14:15	12	15	17				
14:30	19	24	21				
14:45	30	23	40				
15:00	24	15	27				
15:15	22	21	18				
15:30	24	19	26				
15:45	16	15	17				
16:00	11	21	23				
16:15	19	21	15				
16:30	16	22	12				
16:45	24	18	23				
17:00	17	14	23				
17:15	17	25	20				
17:30	15	9	11				
17:45	18	16	13				
18:00	8	4	14				
18:15	15	11	8				
18:30	17	12	7				
18:45	6	10	10				
19:00	8	13	8				
19:15	11	7	4				
19:30	9	9	12				
19:45	7	7	14				
20:00	6	7	4				
20:15	7	5	4				
20:30	8	7	5				
20:45	3	4	1				
21:00	9	6	7				
21:15	6	5	2				
21:30	3	2	5				
21:45	2	3	3				
22:00	3	3	3				
22:15	4	3	3				
22:30	0	2	2				
22:45	2	1	2				
23:00	4	1	3				
23:15	1	2	0				
23:30	1	0	2				
23:45	0	0	2				



Site notes:

Vehicle Speed Summary

Saanich Engineering Department

Count Id: [R0915-01](#)

Filename: [Ridgebank Cres between Carey Rd and Vanalman Ave-Mar-2019.xlsm](#)

Location: Ridgebank Cres between Carey Rd and Vanalman Ave

Note: Carey Rd and Vanalman Ave

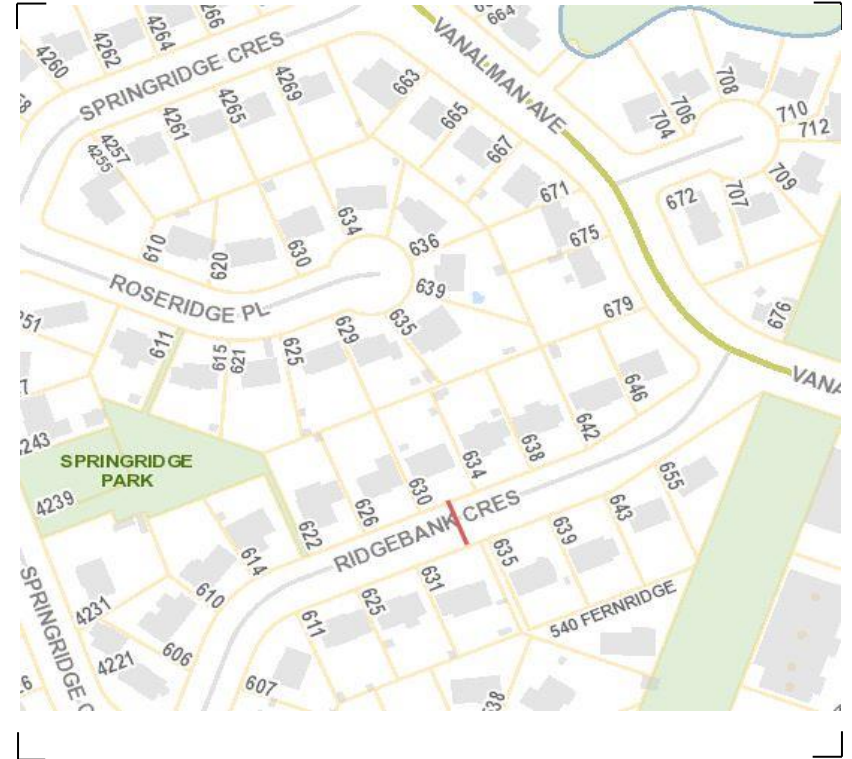
Direction: **East-West**

Dates: **March 11, 2019 To March 15, 2019**

Filtered data

AVG. SPEED	22 mph	36 km/h
50 % SPEED	22 mph	36 km/h
85 % SPEED	26 mph	42 km/h
95 % SPEED	28 mph	46 km/h

Location Map



Ridgebank Cres between Carey Rd and Vanalman Ave

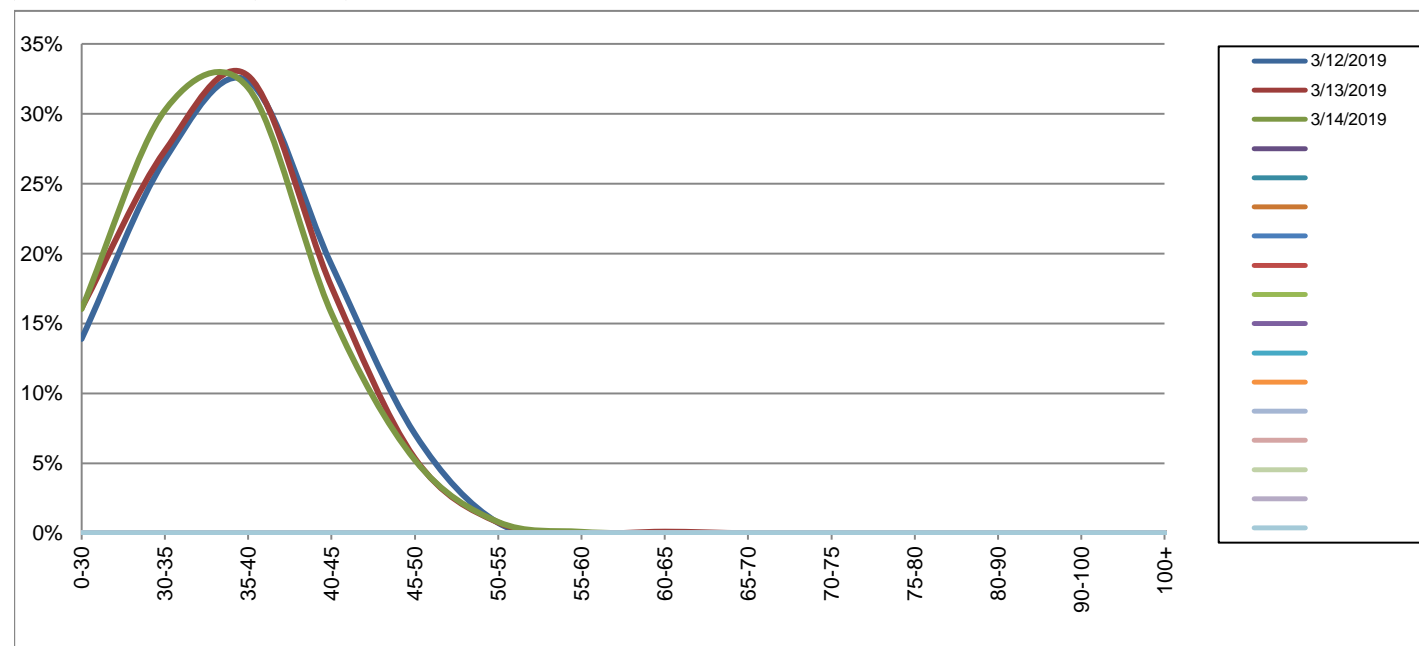
Westbound

March 12, 2019 to March 14, 2019

Daily Speed Bin Percentages															Daily Speed Bin Volumes														Total	Avg.
Bin #	1	2	3	4	5	6	7	8	9	10	11	12	13	14	1	2	3	4	5	6	7	8	9	10	11	12	13	14	Volume	Speed
Bin Speeds	0-30	30-35	35-40	40-45	45-50	50-55	55-60	60-65	65-70	70-75	75-80	80-90	90-100	100+	0-30	30-35	35-40	40-45	45-50	50-55	55-60	60-65	65-70	70-75	75-80	80-90	90-100	100+		
3/12/2019	13.9%	26.7%	32.3%	19.2%	7.1%	0.7%	0.0%	0.0%	0.0%	0.0%	0.0%	0.0%	0.0%	0.0%	131	252	305	181	67	7	0	0	0	0	0	0	0	0	943	35
3/13/2019	16.1%	27.4%	32.7%	17.6%	5.4%	0.8%	0.0%	0.1%	0.0%	0.0%	0.0%	0.0%	0.0%	0.0%	147	250	299	161	49	7	0	1	0	0	0	0	0	0	914	34
3/14/2019	16.0%	30.2%	31.9%	15.7%	5.2%	0.8%	0.1%	0.0%	0.0%	0.0%	0.0%	0.0%	0.0%	0.0%	159	300	316	156	52	8	1	0	0	0	0	0	0	0	992	34
Total	15.3%	28.2%	32.3%	17.5%	5.9%	0.8%	0.0%	0.0%	0.0%	0.0%	0.0%	0.0%	0.0%	0.0%	437	802	920	498	168	22	1	1	0	0	0	0	0	2849	34	

Speed Data Summary

Bin #	1	2	3	4	5	6	7	8	9	10	11	12	13	14	Total
Bin Speeds	0-30	30-35	35-40	40-45	45-50	50-55	55-60	60-65	65-70	70-75	75-80	80-90	90-100	100+	
Survey Total	437	802	920	498	168	22	1	1	0	0	0	0	0	0	2849
% Total	15.3%	28.2%	32.3%	17.5%	5.9%	0.8%	0.0%	0.0%	0.0%	0.0%	0.0%	0.0%	0.0%	0.0%	100%
Accumulated %	15.3%	43.5%	75.8%	93.3%	99.2%	99.9%	100.0%	100.0%	100.0%	100.0%	100.0%	100.0%	100.0%	100.0%	
Inverse Accum. %	84.7%	56.5%	24.2%	6.7%	0.8%	0.1%	0.0%	0.0%	0.0%	0.0%	0.0%	0.0%	0.0%	0.0%	
Average Speed	34 KM/H														



Site notes:

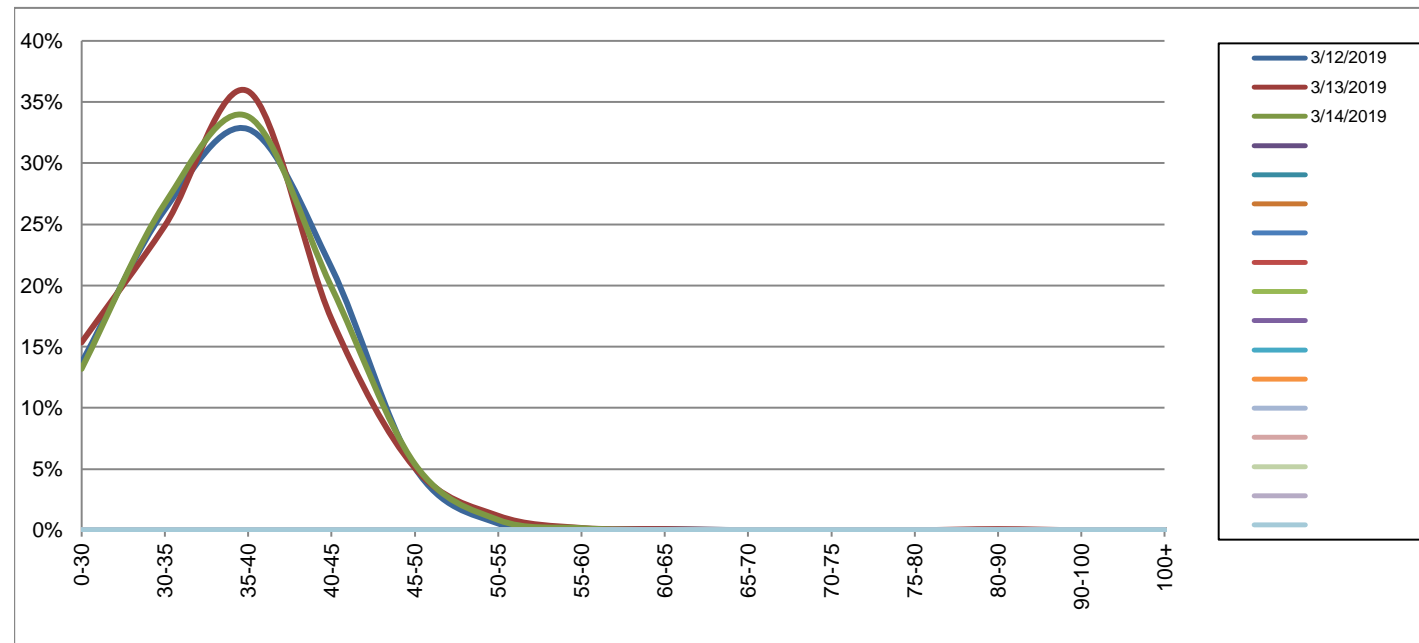
Ridgebank Cres between Carey Rd and Vanalman Ave

Eastbound
March 12, 2019 to March 14, 2019

Daily Speed Bin Percentages															Daily Speed Bin Volumes														Total	Avg.
Bin #	1	2	3	4	5	6	7	8	9	10	11	12	13	14	1	2	3	4	5	6	7	8	9	10	11	12	13	14	Volume	Speed
Bin Speeds	0-30	30-35	35-40	40-45	45-50	50-55	55-60	60-65	65-70	70-75	75-80	80-90	90-100	100+	0-30	30-35	35-40	40-45	45-50	50-55	55-60	60-65	65-70	70-75	75-80	80-90	90-100	100+		
3/12/2019	13.7%	26.2%	32.8%	21.5%	5.1%	0.5%	0.1%	0.1%	0.0%	0.0%	0.0%	0.0%	0.0%	0.0%	150	287	359	235	56	6	1	1	0	0	0	0	0	0	1095	35
3/13/2019	15.3%	24.9%	35.9%	17.3%	5.1%	1.2%	0.2%	0.1%	0.0%	0.0%	0.0%	0.1%	0.0%	0.0%	169	274	395	190	56	13	2	1	0	0	0	1	0	0	1101	34
3/14/2019	13.2%	26.7%	33.8%	19.9%	5.4%	0.8%	0.2%	0.0%	0.0%	0.0%	0.0%	0.0%	0.0%	0.0%	156	316	400	235	64	10	2	0	0	0	0	0	0	0	1183	35
Total	14.1%	26.0%	34.2%	19.5%	5.2%	0.9%	0.1%	0.1%	0.0%	0.0%	0.0%	0.0%	0.0%	0.0%	475	877	1154	660	176	29	5	2	0	0	0	1	0	0	3379	35

Speed Data Summary

Bin #	1	2	3	4	5	6	7	8	9	10	11	12	13	14	Total
Bin Speeds	0-30	30-35	35-40	40-45	45-50	50-55	55-60	60-65	65-70	70-75	75-80	80-90	90-100	100+	
Survey Total	475	877	1154	660	176	29	5	2	0	0	0	1	0	0	3379
% Total	14.1%	26.0%	34.2%	19.5%	5.2%	0.9%	0.1%	0.1%	0.0%	0.0%	0.0%	0.0%	0.0%	0.0%	100%
Accumulated %	14.1%	40.0%	74.2%	93.7%	98.9%	99.8%	99.9%	100.0%	100.0%	100.0%	100.0%	100.0%	100.0%	100%	
Inverse Accum. %	85.9%	60.0%	25.8%	6.3%	1.1%	0.2%	0.1%	0.0%	0.0%	0.0%	0.0%	0.0%	0.0%	0.0%	
Average Speed	35 KM/H														



Site notes:

Ridgebank Cres between Carey Rd and Vanalman Ave

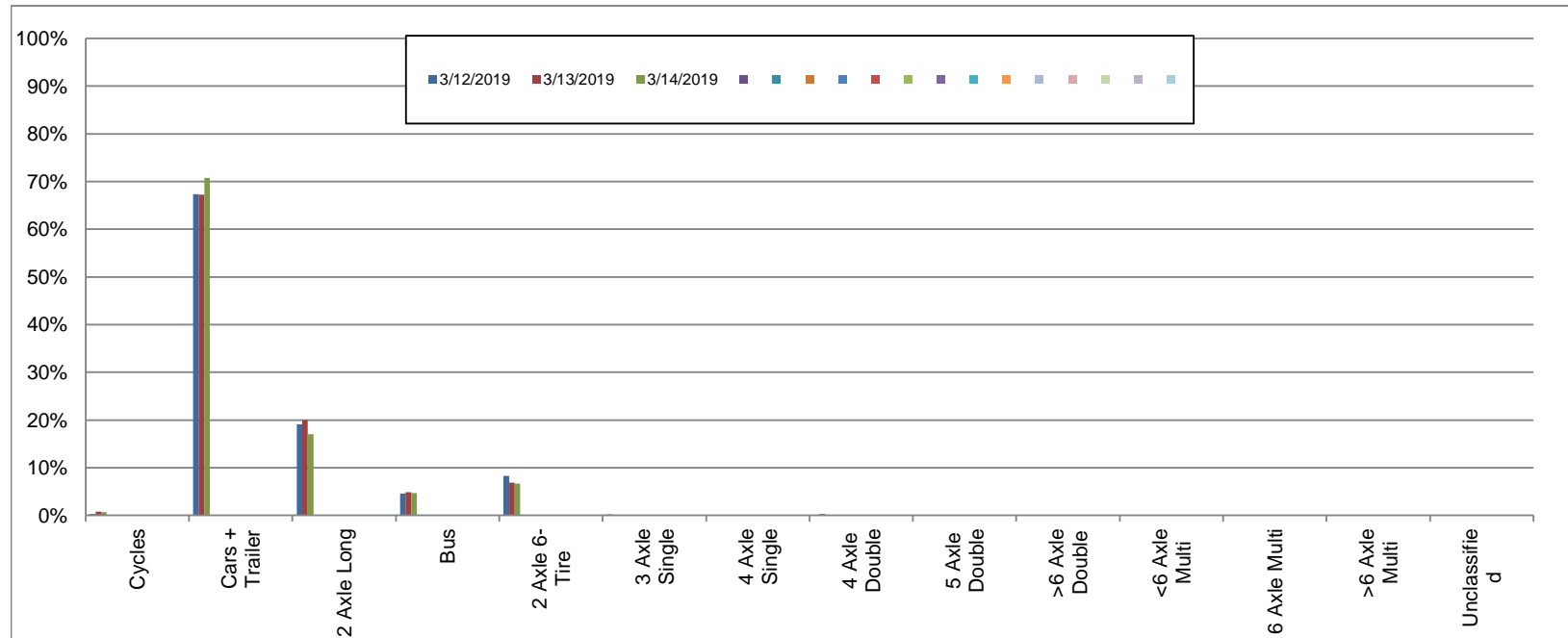
Westbound

March 12, 2019 to March 14, 2019

Daily Class Bin Percentages															Daily Class Bin Volumes															
Bin #	1	2	3	4	5	6	7	8	9	10	11	12	13	14	1	2	3	4	5	6	7	8	9	10	11	12	13	14	Total Volume	
Bin Class	Cycles	Cars + Trailer	2 Axle Long	Bus	2 Axle 6-Tire	3 Axle Single	4 Axle Single	4 Axle Double	5 Axle Double	>6 Axle Double	<6 Axle Multi	6 Axle Multi	>6 Axle Multi	Unclassified	Cycles	Cars + Trailer	2 Axle Long	Bus	2 Axle 6-Tire	3 Axle Single	4 Axle Single	4 Axle Double	5 Axle Double	>6 Axle Double	<6 Axle Multi	6 Axle Multi	>6 Axle Multi	Unclassified		
3/12/2019	0.3%	67.3%	19.1%	4.6%	8.3%	0.2%	0.0%	0.1%	0.0%	0.0%	0.0%	0.0%	0.0%	0.1%	3	635	180	43	78	2	0	1	0	0	0	0	0	0	1	943
3/13/2019	0.8%	67.3%	19.9%	4.8%	6.9%	0.0%	0.0%	0.3%	0.0%	0.0%	0.0%	0.0%	0.0%	0.0%	7	615	182	44	63	0	0	3	0	0	0	0	0	0	0	914
3/14/2019	0.7%	70.8%	17.0%	4.6%	6.7%	0.1%	0.0%	0.0%	0.0%	0.0%	0.0%	0.0%	0.0%	0.1%	7	702	169	46	66	1	0	0	0	0	0	0	0	1	992	
Total	0.6%	68.5%	18.6%	4.7%	7.3%	0.1%	0.0%	0.1%	0.0%	0.0%	0.0%	0.0%	0.0%	0.1%	17	1952	531	133	207	3	0	4	0	0	0	0	0	2	2849	

Class Data Summary

Bin #	1	2	3	4	5	6	7	8	9	10	11	12	13	14	Total Volume
Bin Class	Cycles	Cars + Trailer	2 Axle Long	Bus	2 Axle 6-Tire	3 Axle Single	4 Axle Single	4 Axle Double	5 Axle Double	>6 Axle Double	<6 Axle Multi	6 Axle Multi	>6 Axle Multi	Unclassified	Total Volume
Survey Total	17	1952	531	133	207	3	0	4	0	0	0	0	0	2	2849
% Total	0.6%	68.5%	18.6%	4.7%	7.3%	0.1%	0.0%	0.1%	0.0%	0.0%	0.0%	0.0%	0.0%	0.1%	100%
Accumulated %	0.6%	69.1%	87.8%	92.4%	99.7%	99.8%	99.8%	99.9%	99.9%	99.9%	99.9%	99.9%	99.9%	100.0%	
Inv. Accum. %	99.4%	30.9%	12.2%	7.6%	0.3%	0.2%	0.2%	0.1%	0.1%	0.1%	0.1%	0.1%	0.0%		



Classification Descriptions

Bin #	Bin Description
1	Motorcycles
2	Passenger cars, including those with recreational trailers
3	2-axle pick-ups, vans, and RVs, including those with recreational trailers
4	Buses
5	2-axle, 6-tire single units
6	3-axle single units
7	4-axle single units
8	3-axle or 4-axle double unit
9	5-axle double unit
10	6-, 7-, or 8-axle double unit
11	5-axle multiple unit
12	6-axle multiple unit
13	7-or-more-axle multiple unit
14	Vehicles that could not be classified

Site notes:

Ridgebank Cres between Carey Rd and Vanalman Ave

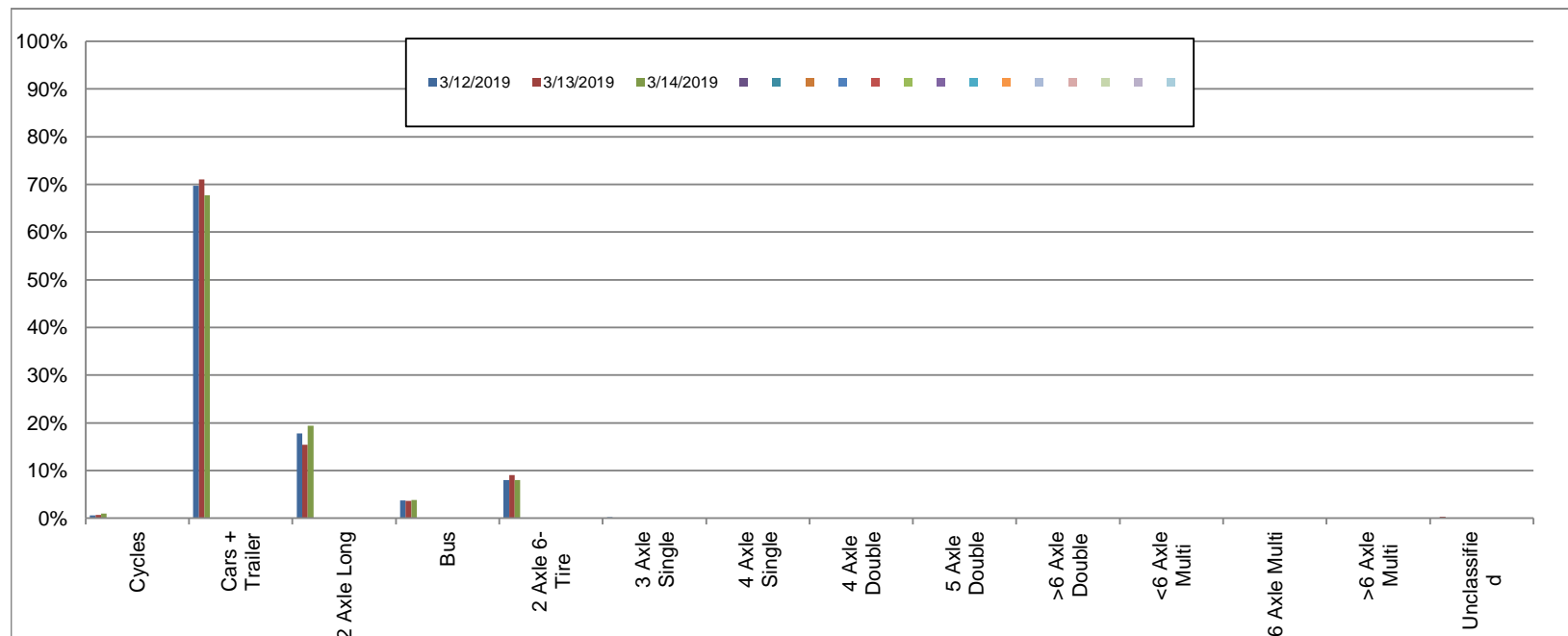
Eastbound

March 12, 2019 to March 14, 2019

Daily Class Bin Percentages															Daily Class Bin Volumes														
Bin #	1	2	3	4	5	6	7	8	9	10	11	12	13	14	1	2	3	4	5	6	7	8	9	10	11	12	13	14	Total Volume
Bin Class	Cycles	Cars + Trailer	2 Axle Long	Bus	2 Axle 6-Tire	3 Axle Single	4 Axle Single	4 Axle Double	5 Axle Double	>6 Axle Double	<6 Axle Multi	6 Axle Multi	>6 Axle Multi	Unclassified	Cycles	Cars + Trailer	2 Axle Long	Bus	2 Axle 6-Tire	3 Axle Single	4 Axle Single	4 Axle Double	5 Axle Double	>6 Axle Double	<6 Axle Multi	6 Axle Multi	>6 Axle Multi	Unclassified	
3/12/2019	0.5%	69.7%	17.8%	3.7%	8.0%	0.2%	0.0%	0.0%	0.0%	0.0%	0.0%	0.0%	0.0%	0.0%	6	763	195	41	88	2	0	0	0	0	0	0	0	0	1095
3/13/2019	0.6%	71.0%	15.4%	3.6%	9.0%	0.0%	0.0%	0.0%	0.0%	0.0%	0.0%	0.0%	0.0%	0.3%	7	782	170	40	99	0	0	0	0	0	0	0	0	3	1101
3/14/2019	0.9%	67.7%	19.4%	3.8%	7.9%	0.1%	0.0%	0.1%	0.0%	0.0%	0.0%	0.0%	0.0%	0.1%	11	801	229	45	94	1	0	1	0	0	0	0	0	1	1183
Total	0.7%	69.4%	17.6%	3.7%	8.3%	0.1%	0.0%	0.0%	0.0%	0.0%	0.0%	0.0%	0.0%	0.1%	24	2346	594	126	281	3	0	1	0	0	0	0	0	4	3379

Class Data Summary

Bin #	1	2	3	4	5	6	7	8	9	10	11	12	13	14	Total Volume
Bin Class	Cycles	Cars + Trailer	2 Axle Long	Bus	2 Axle 6-Tire	3 Axle Single	4 Axle Single	4 Axle Double	5 Axle Double	>6 Axle Double	<6 Axle Multi	6 Axle Multi	>6 Axle Multi	Unclassified	Total Volume
Survey Total	24	2346	594	126	281	3	0	1	0	0	0	0	0	4	3379
% Total	0.7%	69.4%	17.6%	3.7%	8.3%	0.1%	0.0%	0.0%	0.0%	0.0%	0.0%	0.0%	0.0%	0.1%	100%
Accumulated %	0.7%	70.1%	87.7%	91.4%	99.8%	99.9%	99.9%	99.9%	99.9%	99.9%	99.9%	99.9%	99.9%	100.0%	
Inv. Accum. %	99.3%	29.9%	12.3%	8.6%	0.2%	0.1%	0.1%	0.1%	0.1%	0.1%	0.1%	0.1%	0.1%	0.0%	



Classification Descriptions

Bin #	Bin Description
1	Motorcycles
2	Passenger cars, including those with recreational trailers
3	2-axle pick-ups, vans, and RVs, including those with recreational trailers
4	Buses
5	2-axle, 6-tire single units
6	3-axle single units
7	4-axle single units
8	3-axle or 4-axle double unit
9	5-axle double unit
10	6-, 7-, or 8-axle double unit
11	5-axle multiple unit
12	6-axle multiple unit
13	7-or-more-axle multiple unit
14	Vehicles that could not be classified

Site notes: